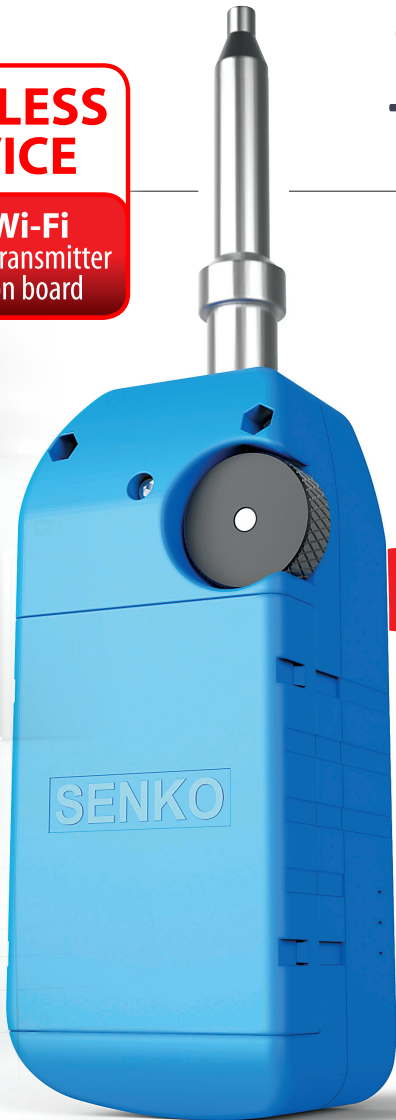


Smart Probe™ for Fiber Inspection

**WIRELESS
DEVICE**

 **Wi-Fi
Transmitter
on board**



Wi-Fi STREAMING

Easily connects to Smartphones and Tablets

Images are captured digitally and streamed on the monitor of any compatible device

The FTTA Smart Probe allows technicians to inspect the fiber endfaces. Images are captured digitally and streamed on the monitor of any Android Tablet or Smartphone. The FTTA Smart Probe is an ergonomically designed, compact, Wi-Fi probe for smart phones and tablets. Featuring integrated Wi-Fi module and left/right handed thumb or finger operation for greater ease of use and convenience. Incorporating high resolution sensor outputting 960 x 544 pixel resolution images at 16:9 aspect ratio, the Smart Probe can easily view two MT/MPO fibers rather than just a single fiber. The App, available from Google Play, includes digital zoom and still capture capabilities.

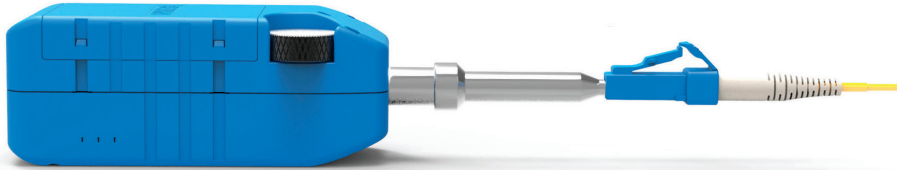


FEATURES

- WiFi streaming: easily connect with Smartphones and Tablets
- Replaceable and rechargeable battery
- Available adapter tips (LC, SC, FC, ST, DIN, MPO)
- High-Definition image
- True completely wireless probe.
- Integrated Wi-Fi module
- Highly compact easy to use design
- Left or right handed thumb/finger operation
- Free Smart Phone/Tablet app with digital zoom and still capture functions
- Tips for all common connector types for both patchcord and patch panel inspection

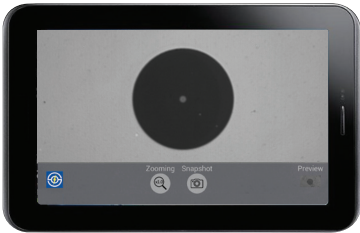
Smart Probe Wi-Fi

Fiber Optic Inspection Made Easy



CLEAN PASS

DIRTY FAIL

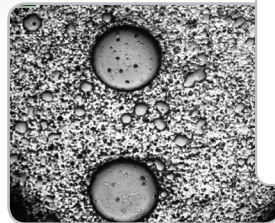


MPO Tip Up to 24F Available

- For SM & MM MPO (up to 24F)
- High precision alignment
- Available in APC and PC version



Visualization of MT 12 fiber connector end face (two fibers of MT 12 fiber connector)



ORDER CODE	DESCRIPTION
SCK-VM2000-01	Smart Probe Wi-Fi

SPECIFICATIONS	
Field of View	457µm x 259µm
Image Resolution	960 x 544
Magnification	328 (based on 7" tablet screen)
Frame Rate	15 fps
Video Format	MJPG
Still Format	JPEG
Sensor Type	CMOS monochrome.
Zoom Magnification	Digital x1.25;x1.5;x2:
Illumination Method	Coaxial
LED	Blue LED (470nm)
Connectivity	Wi-Fi 802.11 b/g/n
Wireless Signal Rates	11n: up to 150Mbps (dynamic) 11g: up to 54 Mbps (dynamic) 11b: up to 11 Mbps (dynamic)
Frequency Range	2.412Ghz (channel 1)
Power	2 x removable BL-5C batteries
Operating Time	3 hours continuous operation
Operating Temp.	-10°C ~ +50°C
Storage Temp.	-30°C ~ +100°C
Weight	147g including 2 x BL-5C batteries 138g including 2 x BL-4C batteries
Dimension Without Tips	137.7mm (L) x 40.0mm (H) x 37.4mm (W)
Relative Humidity	10% - 90%, Non-Condensing
Storage Humidity	5% - 90%, Non-Condensing
Software	Live image (inspection) and still capture viewing, Zoom (live image) and stills capture functions
OS Compatibility	Android 4.0.1 (API level 14) and above

SENKO ADVANCED COMPONENTS, INC.

Americas

USA EAST 1-888-32-SENKO
USA WEST 1-858-623-3300
TEXAS 1-972-661-9080
Sales-Americas@senko.com

South America

BRAZIL +55-21-3736-7065
Sales-Brazil@senko.com

Asia

HONG KONG +852-2121-0516
SHANGHAI +86-21-5830-4513
SHENZHEN +86-755-2533-4893
Sales-Asia@senko.com

Europe

UK +44 (0) 118 982 1600
ITALY +39 011 839 98 28
POLAND + 48 71 396 36 59
Sales-Europe@senko.com

Asia Pacific

AUSTRALIA +61 (0) 3 9755-7922
Sales-Asia-Pacific@senko.com
Middle East North Africa
DUBAI +971 4 8865160
Sales-MENA@senko.com

Japan

TOKYO +81 (0) 3 5825-0911
Sales-Japan@senko.com

CALL 1-888-32-SENKO